

Mødedato: 12. september 2023, kl. 14:00-15:00

Mødested: 1520-731 (Sea View)

Mødeemne: 2. møde i Nat-FISU 2023

Deltagere: Anders Møller (CS/forperson), Astrid Klingen (Nat forskningsrådgiver, referent), Frank Grundahl (PHYS), Jesper Lykkegaard Karlsen (MBG), Jonas Elm (CHEM), Knud Møller (Nat-Tech-IT), Rodrigo Labouriau (MATH), Thomas Boesen (iNANO), Thomas Mejer Hansen (GEO), Urs Treier (BIO), N.N. (Nat data management koordinator)

Afbud: --

Gæst: --

Udkast til dagsorden

1. Velkomst og godkendelse af dagsorden v/Anders (5 min)

2. Møderne i CISU /v Anders (10 min)

Bilag 2: Referat fra møde i CISU 21. juni 2023

Næste møde i CISU: 28. september 2023

3. Planer for at styrke cybersikkerhed på AU /v Knud (10 min)

Bilag 3: Slide deck

Vicedirektør for AU IT Peter Bruun og IT informationssikkerhedschef Thomas Kaaber ønsker at besøge nogle eksperter fra forskningsenhederne, som arbejder med IP (Intellectual Properties) på Nat-Tech, som led i en fortsættelse af Universitetets ledelsens fokus på at styrke cybersikkerheden på AU (se den vedlagte præsentation).

4. Erfaringer med ERDA- infomøde for CHEM/iNANO v/Jonas (10 min)

Link: [ERDA vejledningsportal](#)

5. Opsamling efter GDPR-informationsmøderne v/Astrid (5 min)

Bilag 5: Slide deck fra GDPR-enheden (fra virtuelt møde d. 13. juni)

6. Nyt fra AU-IT v/ Knud (5 min)

7. Nyt fra medlemmerne /v alle (10 min)

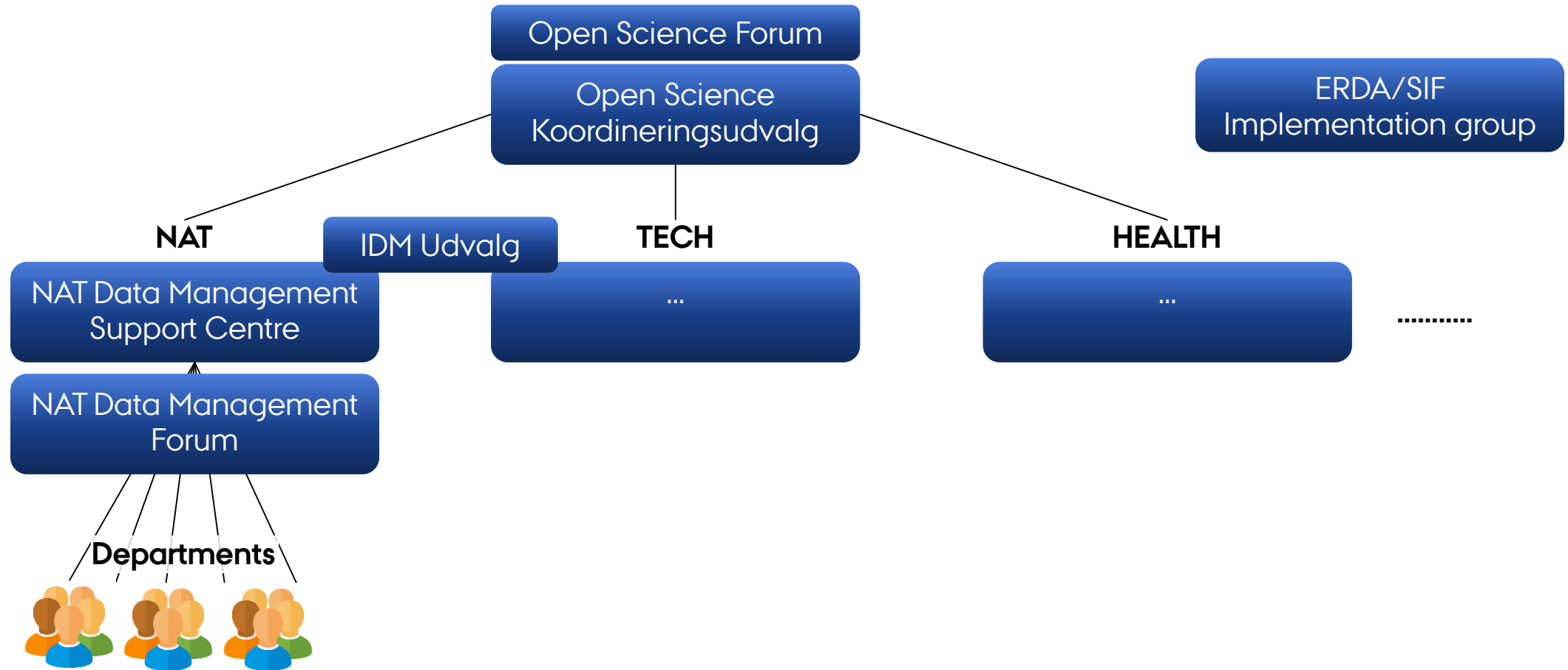
8. Evt. v/alle (5 min)

Dato for næste møde? Med deltagelse fra Thomas Kaaber, der orienterer om arbejdet i CISU?

DATA MANAGEMENT ERDA / SIF

Electronic Research Data Archive
Sensitive Information Facility

NAT DATA MANAGEMENT

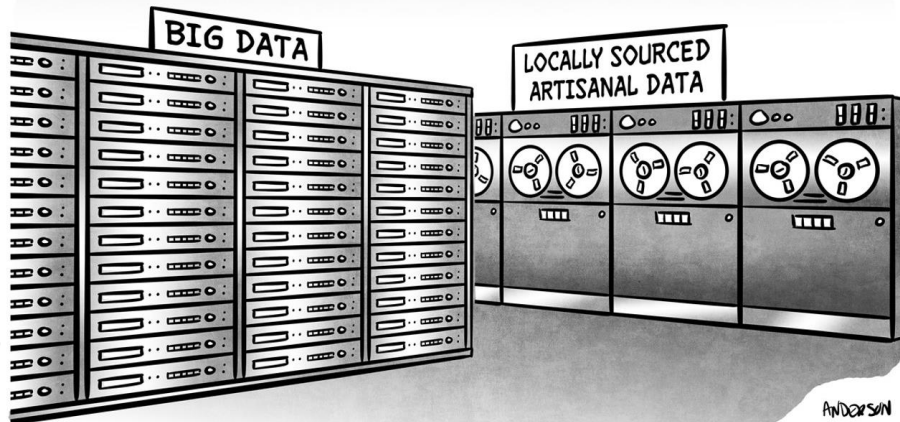


RESEARCH DATA MANAGEMENT

RDM is a part of all steps in research...



"Data" can be many things...



It needs to be organized and preserved...

Findable
Accessible
Interoperable
Reusable



ONE MAJOR PROBLEM SO FAR...

Aarhus University has been missing an efficient data storage solution for research data!



The solution:

ERDA / SIF

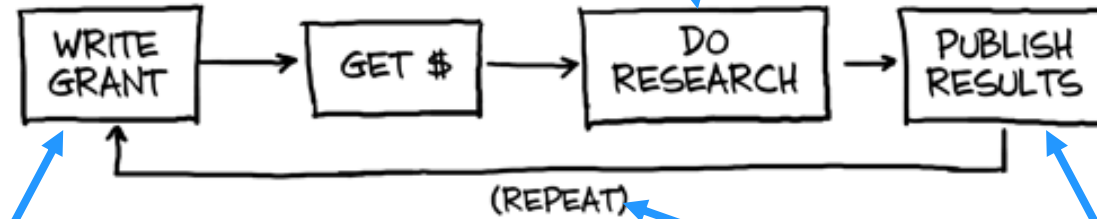
Electronic Research Data Archive
Sensitive Information Facility



ERDA / SIF

ERDA/SIF:

Safe data storage
Data sharing
Backups



Data Management Plan
(ERDA/SIF won't help here)

ERDA/SIF:

Make data available
Create DOIs

O-DRIVE, U-DRIVE, ONEDRIVE ... ???

It has been decided by the Aarhus University management that the cost for data storage on the U- and O-drive (personal and share-drives) is going to be passed to the departments.

Prize is calculated as **1.219 kr/TB/yr** for all data **exceeding the use on 31/12 2021**.

ERDA/SIF is free!

Plus it is going to have some nice features to help you during your research...



ERDA OR SIF

ERDA

erda-test.au.dk

NO sensitive information.

Full feature set.

SIF

sif-test.au.dk

Sensitive information!

In particular personal data requiring
special care under GDPR.

Fewer features (to protect data!)

VDI interface

Storage

Welcome to ERDA

AU Users	External Users	Advanced Access
Sign up to ERDA using your AU account? sign up		I'm already signed up to ERDA with my AU account! log in

About ERDA

ERDA or Electronic Research Data Archive at Aarhus University (AU) is meant for storing, sharing, analyzing and archiving research data. The intended audience is employees, their collaboration partners and students. ERDA delivers safe central storage space for own and shared files, interactive analysis tools in addition to archiving for safe-keeping and publishing. You can use ERDA as a secure network drive from anywhere and it also comes with a stand-alone file synchronization service similar to Dropbox, but with the data safely stored locally at AU. ERDA is delivered by [AU IT](#) and is currently for test use, but others have access mainly for data archiving and publication with AU DOIs. A roll-out to all of AU is underway to support the general AU [Data Management Guidelines](#).

Sensitive and Personal Data (GDPR)

Please note that while ERDA comes with a strong security focus, it is *only* a solution approved for general scientific data and *not* for highly sensitive data. In particular it is not for personal data classified as sensitive in the EU General Data Protection Regulation (GDPR). In case you need to work on such sensitive data we recommend the ERDA sister facility [SIF](#), which *is* intended and approved for exactly that purpose.

Getting Started

We've gathered information about ERDA in a few short intro guides and a more thorough user guide

- 💡 [Sign Up Intro](#) for AU and external users
- 💡 [Workgroup Intro](#) about creating, managing and accessing Workgroups
- 💡 [Network Drive Intro](#) about using ERDA as a network drive on your computer (only covers Windows for now)
- 💡 [Seafile Intro](#) about Seafile sign up and file synchronization
- 💡 [Seafile Collaboration Intro](#) about Seafile data sharing and exchange
- 💡 [ERDA Overview](#) if you're not sure whether to use ERDA's main storage or Seafile
- 📖 [User Guide](#) with general usage instructions

We strongly recommend reading and following at least the first intro guide if you want to use ERDA.

Status and News

You can always refer to our separate [status and news overview](#) for a.o. the latest ERDA system status as well as information about new or changed features.

Frequently Asked Questions (FAQ)

- + How much storage space do I have on ERDA?
- + Is My ERDA Data Replicated and Backed Up?
- + How do I Transfer Entire Folders to/from ERDA?
- + Can I Share, Exchange and Publish Data in e.g. a Read-only Fashion on ERDA?
- + Is it possible to get a DOI for my ERDA archive?
- + How Are Workgroups Managed?
- + Can I have a shared or separate account for our project?
- + Why can't I use certain characters in file names?
- + How do I install and run software XYZ in Jupyter?

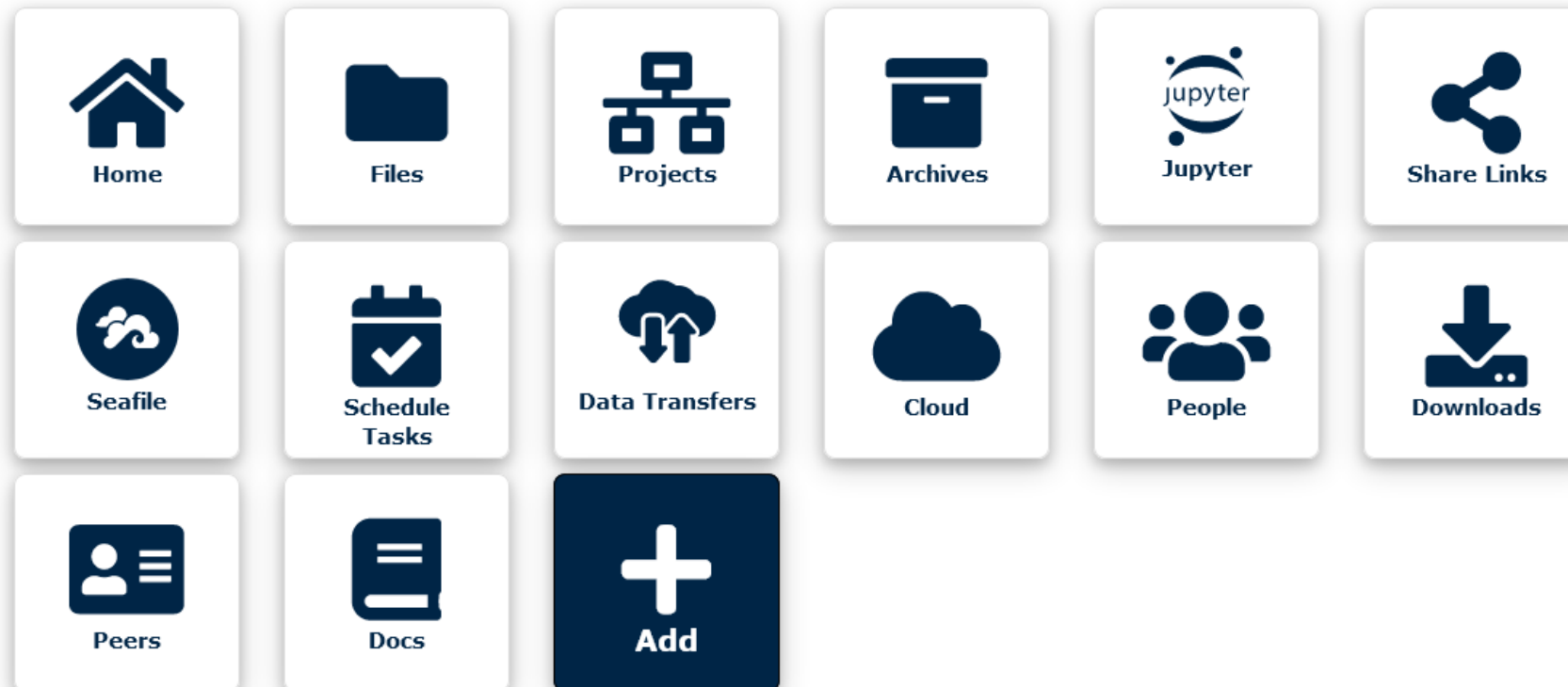


Welcome to ERDA!

Tools from ERDA helps you with storage, sharing and archiving of data. ERDA delivers centralised storage space for personal and shared files.

 **Quick Tip: 2-Factor Authentication (2FA) ...**

Your apps & app-setup



[Support](#)

[About](#)





- TASOC
- Trash
- private_base
- public_base



◆ Name	◆ Size	◆ Type	◆ Date Modified	◆ ...
TASOC	4.00 KB	dir	2022-11-14 14:18	...
Trash	11.50 KB	dir	2022-10-31 15:27	...
private_base	11.50 KB	dir	2022-11-14 14:12	...
public_base	11.50 KB	dir	2022-11-14 14:12	...
welcome.txt	218.00 B	txt	2022-11-14 12:38	...

Click to open upload helper

☐ Hidden files

10 files in current folder of total 84.74 KB in size.

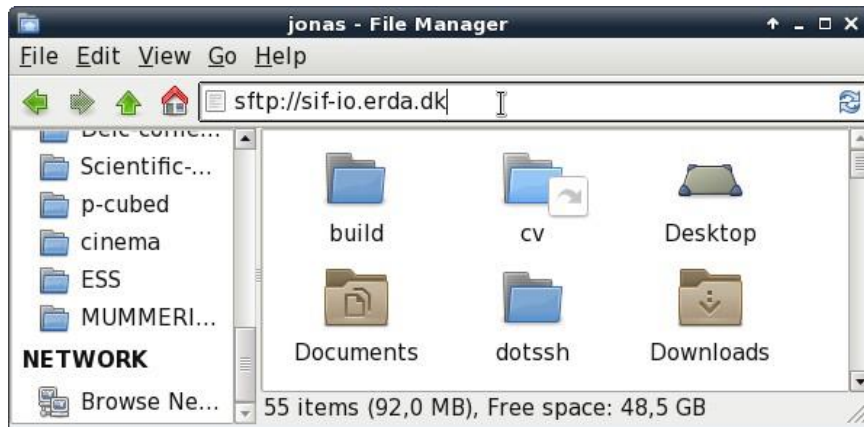
Support

About

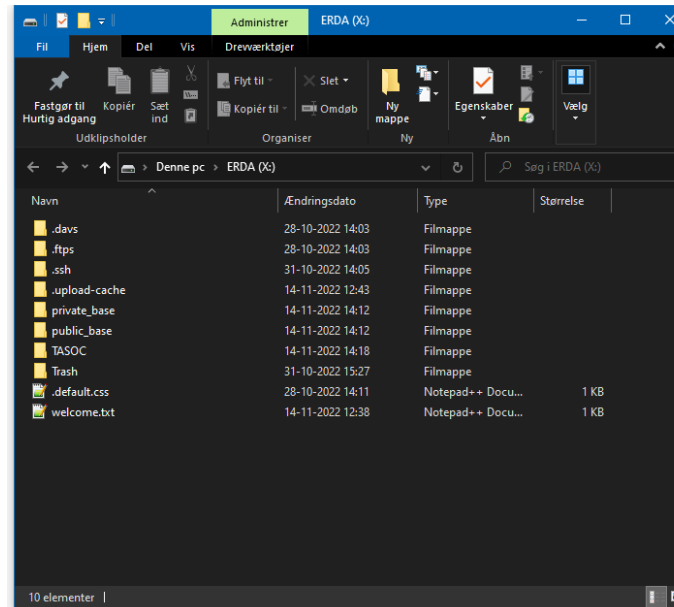


MOUNTING

You can also mount ERDA/SIF as a network drive on your computer
(SFTP / WebDAV / SSHFS)



Directly in File Manager



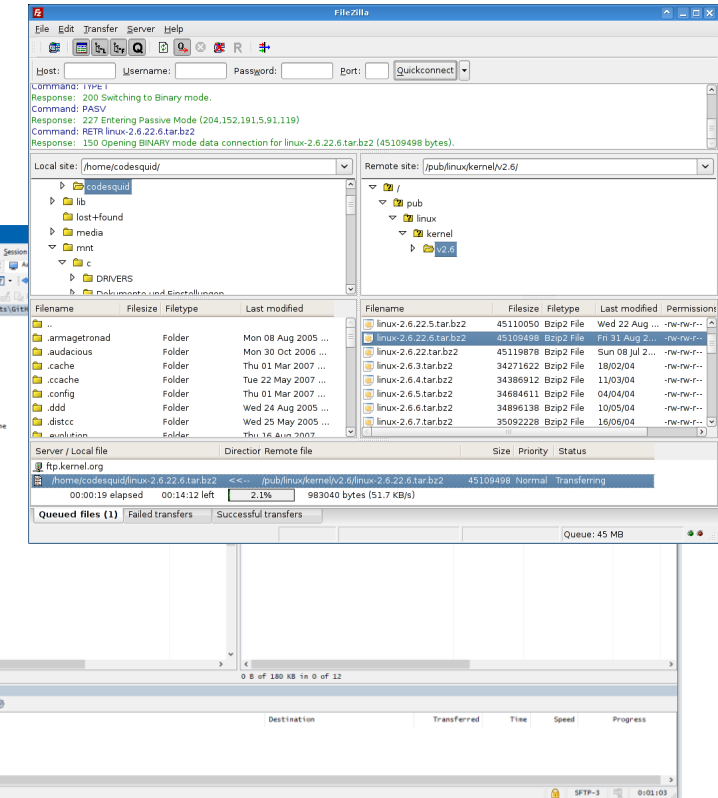
Windows network drive

Linux mount via sshfs

```
$ sshfs io.erda-test.au.dk:/ /mnt/erda -p 2222  
-o idmap=user,reconnect
```

```
$ ls /mnt/erda  
...all my files...
```

FileZilla, WinSCP



FILE SHARING

One of the very important feature of ERDA is the possibility to create "Share Links".

Create a link, and send it to your collaborator – they can now see (or even edit) your files.

You can also mount using the Share Link ID as username and password.





In SIF you can only share data within a project with other people who also have a SIF account (i.e. AU people).

Manage share links

Share Links

1 to 2 of 2 rows

25 share links per page

ID	Action	Path	Access	Created	Active	Invites
KQJ7Chbl9o	 	TASOC/archive_tda	read, write	Tue Nov 15 14:01:49 2022	Yes	
HGOAzekf8b	 	TASOC/archive_tda/TASOC_DR06	read	Mon Nov 14 14:22:19 2022	Yes	

Create Share Link

You can explicitly share files and directories with anyone using share links. That is especially useful when sharing data with people who do not have an account here, so that basic Project sharing is impossible. Individual files can only be shared read-only, but folders can additionally be shared with read-write or write-only access to allow recipients of the share link to write and upload in the share.

Please be careful about giving write access to anyone you do not fully trust, and note that you can always delete share links again later to limit the risks of abuse.

File/folder to share:

Read Access

☒

Write Access

☐

Create share link

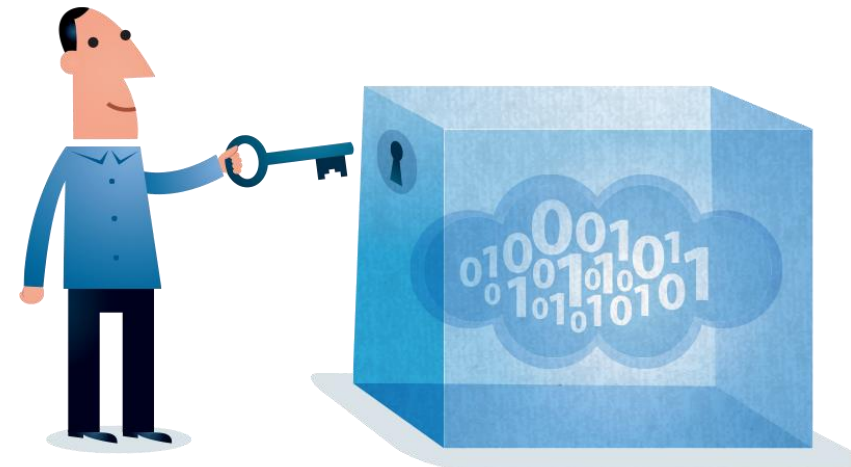
FREEZE ARCHIVE - DOI

In ERDA, you can create a "freeze archive" where you lock the files from further editing.

Then ERDA allows you to "mint" a Digital Object Identifier (DOI), which is a unique identifier for your dataset.

This DOI can then be referenced in subsequent publications.

Get credit for data.



BACKUP WITH ERDA

You can backup arbitrary (research) data to ERDA to protect against data-loss.

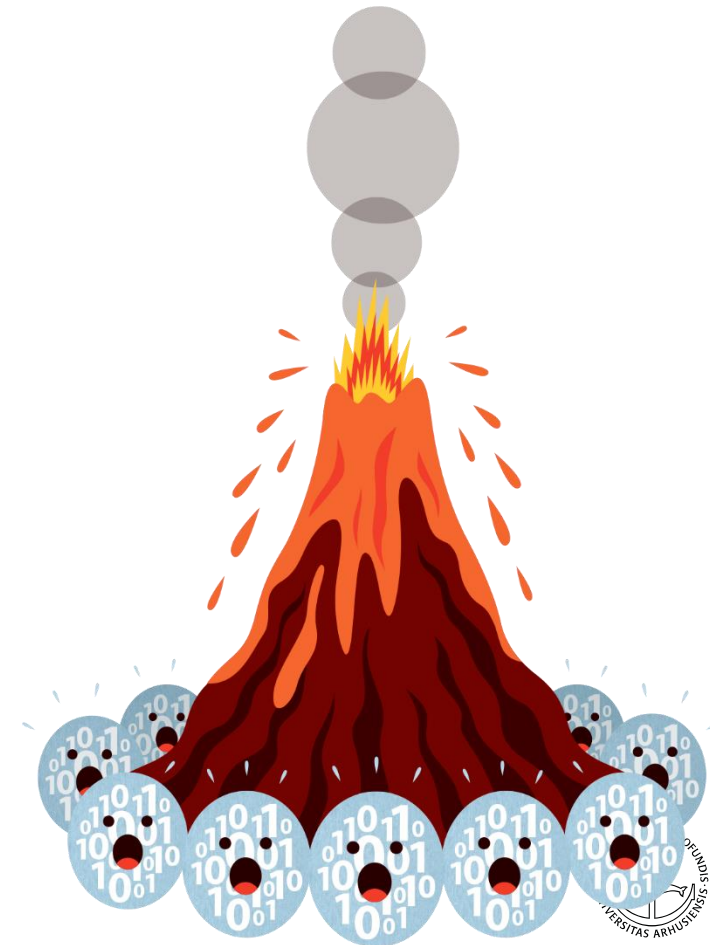
Recommended software is **Duplicati**, but in principle any backup software that can save to SFTP/WebDAV can be used...

Can be set up to run automatically (e.g. once a day) to keep a copy of important data.

No need to backup your Windows Documents and Desktop (they are already backed up!)



DUPLICATI



SEAFIRE / ONEDRIVE ⚠

A file synchronization tool like Dropbox, Google Drive, NextCloud, Box, OneDrive – using ERDA as the backend.

It is very clear that such a tool is a must-have!

SeaFile is being used in Copenhagen and is integrated in ERDA, but needs formal approval (Chinese company).

OneDrive is already available at AU – maybe it can be integrated with ERDA?

Exact details are still unclear... ⚠



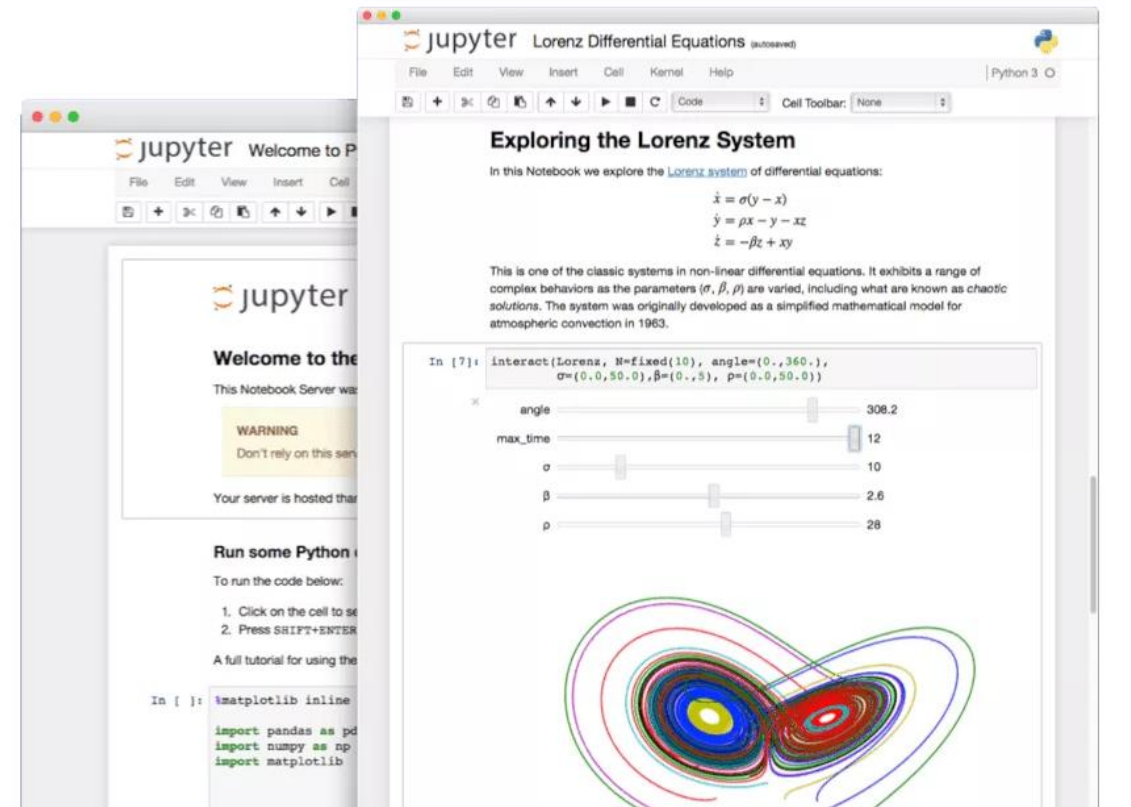
JUPYTER AND VDI ⚠

Play with your data directly in ERDA using Virtual Desktop Infrastructure (VDI) or Jupyter (Python, R).

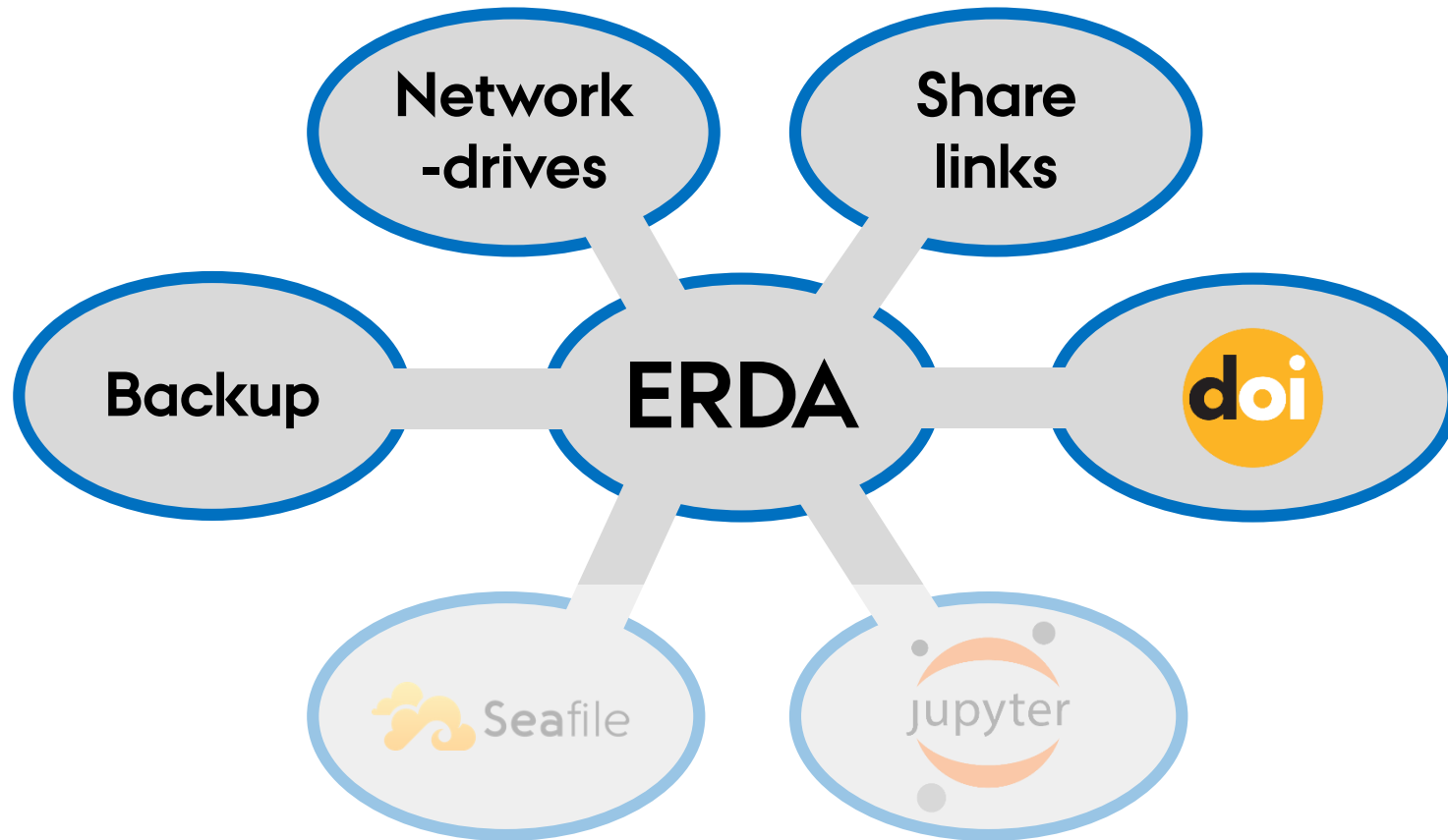
Interact with all your data on ERDA through Jupyter without having to download/mount them on your computer.

On SIF, VDI will be the only way to interact with the data.

Exact details are still unclear... ⚠



OVERVIEW



DeiC
Dataverse

ERDA/SIF
CPH

THE TAKEAWAYS

ERDA/SIF is here soon!

- Pilot-tests are happening right now.
- Manuals and guides are being written.
- Many features planned - some will be ready for launch.



NAT Data Management Support Centre

- Happy to help!
- Tour of the departments/groups to give introductions to ERDA/SIF.

Things to ask yourself:

- How can ERDA/SIF be integrated into my daily workflow?
- What issues does ERDA/SIF not solve for me?
- Do I really need to store all my data forever?





AARHUS
UNIVERSITY